



LEADING INNOVATION

HONG KONG . XIAMEN . SHENZHEN

China C&D Group,
founded in December 1980 in
Xiamen, is a state owned enterprise
and a modern service-oriented
enterprise mainly specialized in
supply chain operation.

After more than 40years of
innovation and transformation, C&D
has developed into a large industrial
investment enterprise group with a
registered capital of 5 billion Yuan,
an annual operating income of over
USD52 billion and total assets of
more than USD40 billion, ranking
the 31st place among the **TOP 500
of China** and 234th place among
Global Fortune 500 in 2020.





Supply Chain Ecosystem

In regards to supply chain operation, C&D has formed 10 core business units, namely, pulp and paper, iron and steel, mineral products, agricultural products, textiles and other light industrial goods, chemical products, mechanical and electrical products, logistics services as well as automobiles and wines/spirits, and has set up business relations in over 150 countries and regions.



Pulp &
paper



Steel



Mineral



Agricultural



Textile



Chemical



Mechanical



Automobile



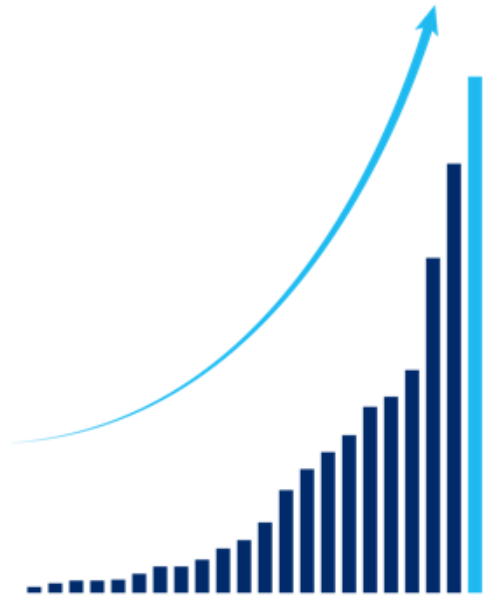
Wine



Logistics

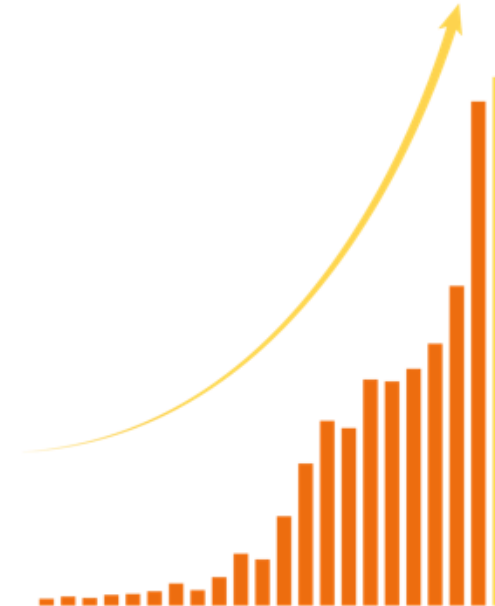
Business Growth

GROWTH RATE OF BUSINESS REVENUE



Annual average growth rate of corporate business revenue was 28.33% over 1998 - 2020

GROWTH RATE OF NET PROFIT



Annual average growth rate of corporate net profit was 28.30% over 1998 - 2020



ESENSE PROFILE

OVER 10 YEARS IN INDUSTRY EXPERIENCE

POWERFUL CUSTOMERS NETWORK PLATFORM

RELIABLE GOV-OWNED FINANCIAL PLATFORM

PROFESSIONAL SERVICE TEAM

Esense International Group,

as the member of C&D Group, we have been engaged in PC industry for over 10years. we provide one-stop OEM service in manufacturing tablet pc, mobile phones, high-tech gadgets, and consumer electronic devices. Our professional services include product design, development, testing, manufacturing, quality control, and logistics planning.

With the carry out of the reliable and powerful supply chain operation and management, with the strong support of government owned financial platform, our team has been able to get involved in managing international projects with key accounts such as Acer, Bango, PC SMART, Lanix and many more. The survives include OEM for IT, PC, Consumer electronic devices and customized projects. Our utmost goal is to achieve a balanced, high efficient supply chain ecosystem.



Intel Global LOEM Partner in the pass 10 years 2010-2020

@ Washington DC

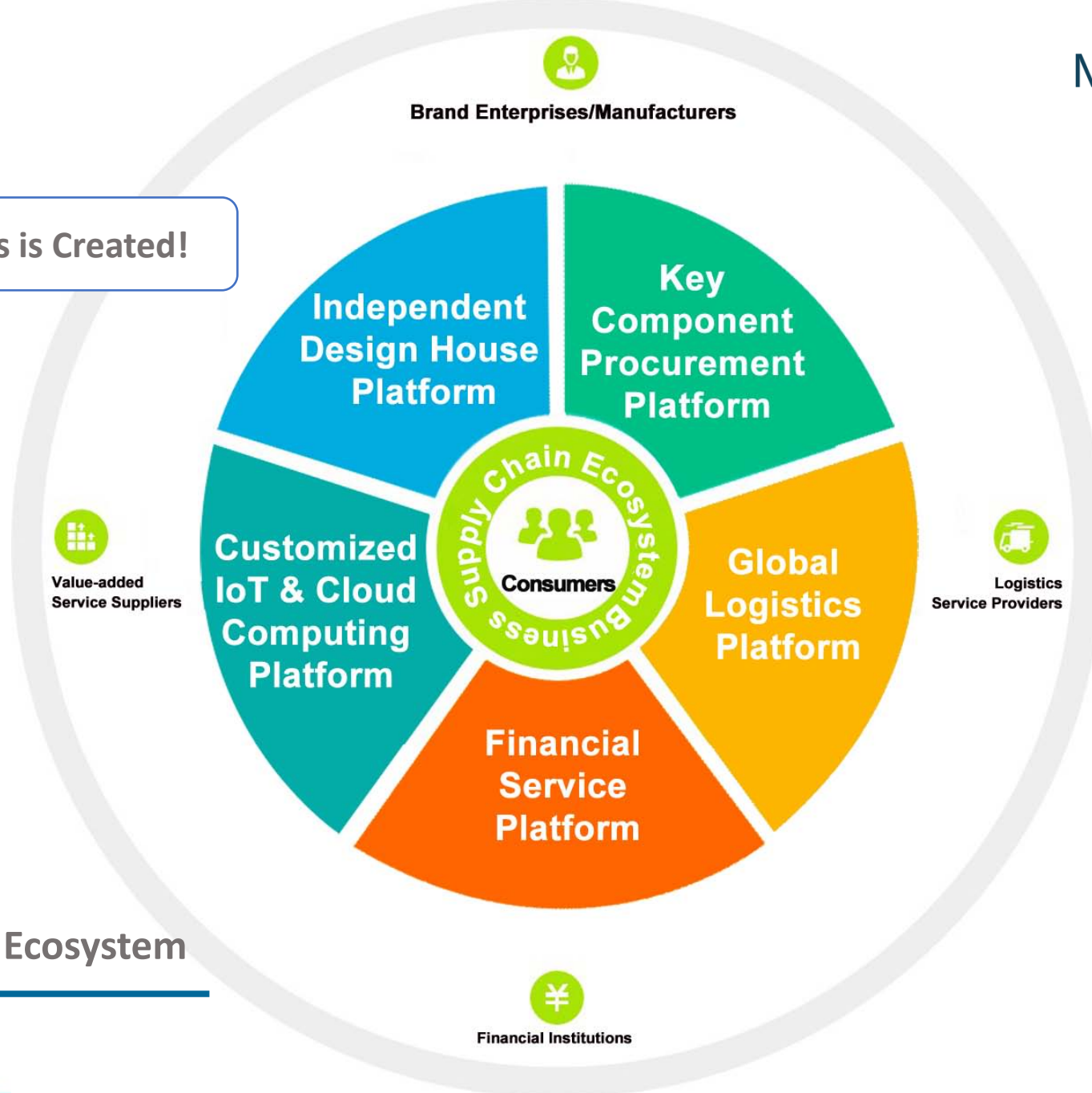
@ Prague

@ Singapore

@ Taipei

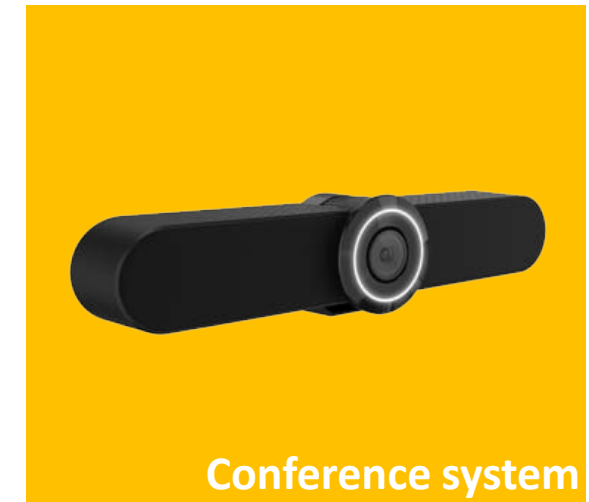
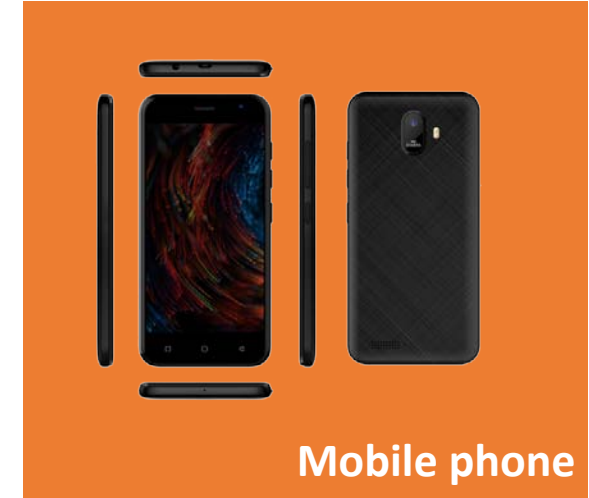


Find out how Competitiveness is Created!



Supply Chain Business Ecosystem

OEM PRODUCTS LINES



INTEL PRODUCTS



Notebook



Tablet PC



AIO



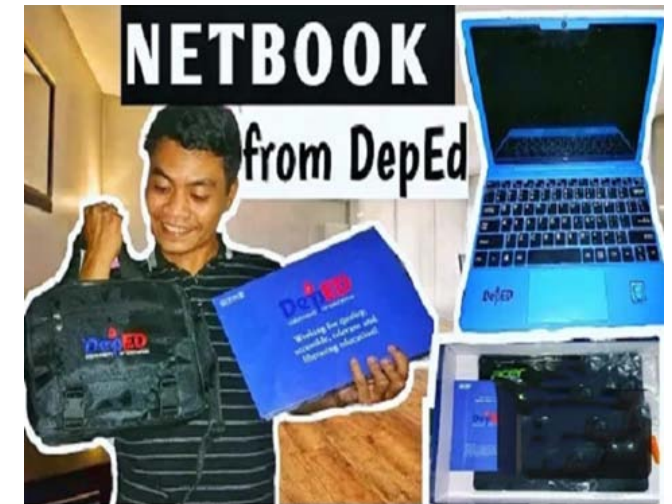
Mini PC



PC Stick



Education Customized projects



Telecom Carrier Customized projects



10 years+ Education Project OEM/ODM

—More than 5 million units of education product shipped



Manufacturer in SZ



Manufacturer in SZ



Manufacturing in SZ

- 12,000 M² modern factory
- Annual capacity – 8million units PC & electronic devices
- 8 manufacturing lines
- 400 M² 1000-grade dust-free room for LCD/TP assembly



Manufacturer in India

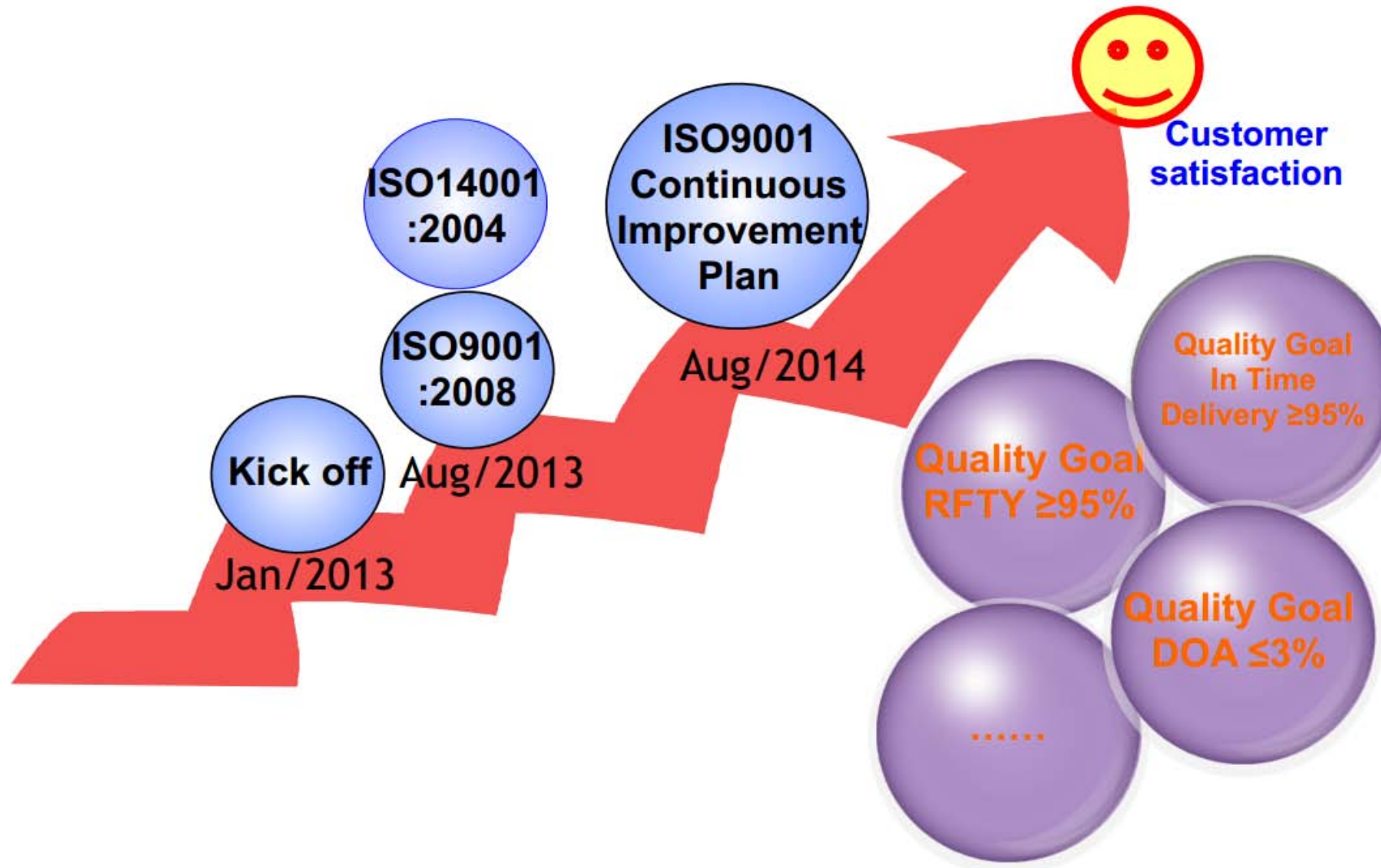


Manufacturing in India

- 30,000 M² modern factory
- Annual capacity – 8million units smart phone / tablet & electronic devices
- 7 SMT lines , monthly production capacity 1KK
- 22 manufacturing lines



QC Roadmap





- High-Tech Enterprise
- Certificate of Environmental Management System
- Certificate of Quality Management System
- Design Patent
- Famous-Brand Product
- BSCI (Business Social Compliance Initiative)
- Software Certificate

PARTNERS WORDWIDE





THANKS

www.esense.com.cn



esense | 易信國際

Leading Innovation